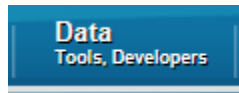


Process for downloading ACS Block Group data for a County.

Follow the prompts below to work you through the method.

www.census.gov



Data Tools and Apps



The American FactFinder



▶ **Advanced Search**



SHOW ME ALL



Geographies
(states, counties, places, ...)



Name

geography name



Be sure to click on the radio button “all summary levels”

Select from:
 most requested summary levels all summary levels individual blocks



Type the name of the county you want, then select it from the dropdown.

(I’m selecting Essex County, New Jersey)

Select Geographies

Enter search terms and an optional geography an

List Name Address Map

Enter a geography name or use the Geography Filter Options below

Essex

- Essex County, New York
- Essex County, New Jersey
- Essex County, Vermont
- Essex CDP, Maryland
- Essex Junction village, Vermont
- Essex Village CDP, Connecticut
- Essex town, Essex County, New York
- Essex township, Kankakee County, Illinois
- Essex township, Stark County, Illinois
- Essex town (balance), Vermont
- Essexville city, Michigan

School District (693,454)

Congressional District (75,459)

All States within Unit



GO



Single-click on the county name to toss it up into the shopping basket at the very upper left.

Geography Name	Geography Type	About
<input type="checkbox"/> Essex County, New Jersey	County	



Type in "Block Group"

List | Name | Address | Map

Enter a geography name or use the Geography Filter Options below

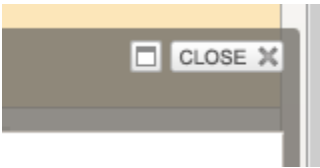
 ×

GO

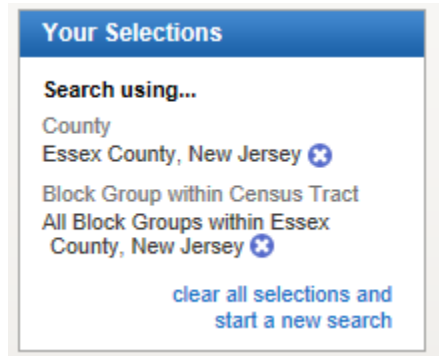


Single-click on "All Block Groups..." and your info will go to the mail shopping basket (very upper left).

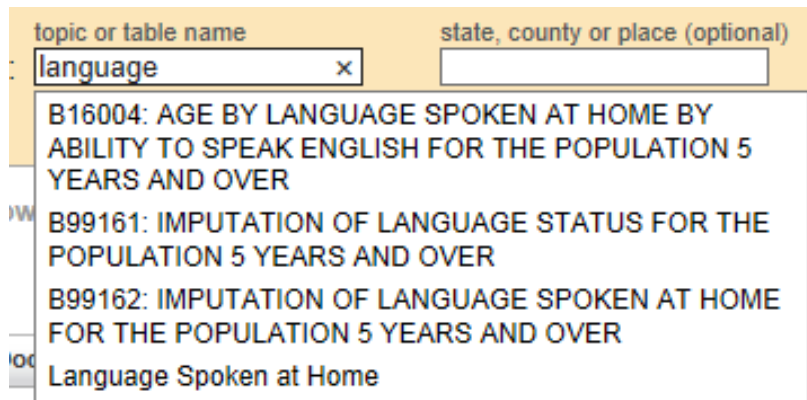
Geography Name	Geography Type
<input type="checkbox"/> All Block Groups within Essex County, New Jersey	Block Group within Census Tract
<input type="checkbox"/> Block Group 4 Urban, Census Tract 140, Ballville CDP, Ballville township, Essex	Urban/Rural within Block Group within



Clean out your main shopping basket of unwanted filters: click on the blue X next to “Essex County, New Jersey”.



Now all the tables available to you will be in the main window. The newest tables (2013 ACS 5-year) will be at the top. Let’s look for something....type in “language”. Then choose “Language spoken at Home”



GO



Click on the blue “household language by” and your table will appear.

Table ID	Table Name or Document Title	Year
<input checked="" type="checkbox"/> B16002	HOUSEHOLD LANGUAGE BY HOUSEHOLD LIMITED ENGLISH SPEAKING STATUS	2013 ACS 5-year estimates

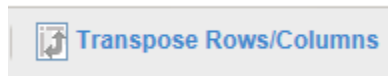


If you click **download**, you will get the whole table for all the block groups with ALL the data. If, instead you want to download the shapefile with 1 data variable, then skip to Part II.



PART II

Click on:



 [Hide Table Tools](#)



 [Create a Map](#)



Click one of the variables (Estimate) you want, written in blue within the table. In this case, “Spanish”.

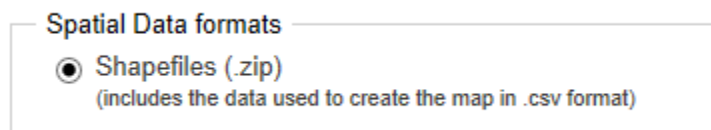
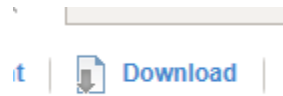
	Total:	Spanish:		
		English only	Spanish:	Limit English speak household
Block Group 1, Census Tract 1, Essex County, New Jersey				
Estimate	638	178	405	
Margin of Error	+/-144	+/-84	+/-113	
Block Group 2, Census Tract 1, Essex County				



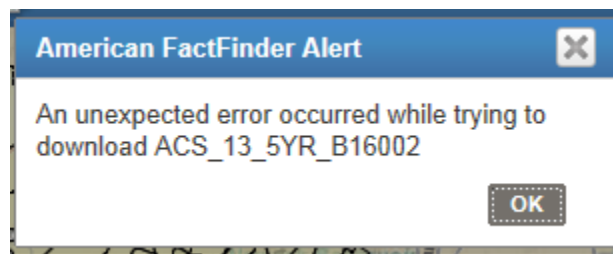
SHOW MAP



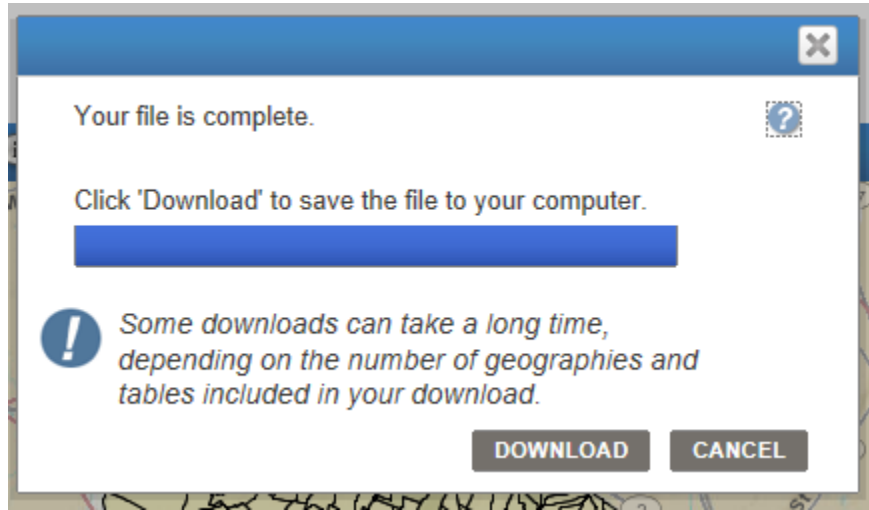
Your map will (probably slowly) appear. (Sometimes you have to scroll your view upward in order to see the map).



Hopefully, you won't get this message! *If you do, just back up and select the same variable within a different block group, and re-create the map, and download.*



You will then get this message; click download and you will get a zip file with shapefile and data variable. (Sometimes I have to click download twice.)



Your files within the ZIP should look like this! Congradulations! You did it! Now join these up in your GIS software.

Name	Type	Modified	Size	Ratio	Packed	Path
150_00.prj	PRJ File	12/4/2014 3:52 PM	425	42%	246	
readme.txt	Readme Doc...	12/4/2014 3:52 PM	195	28%	140	
150_00.sbx	SBX File	12/4/2014 3:52 PM	580	45%	319	
150_00.shp	SHP File	12/4/2014 3:52 PM	584,620	55%	264,946	
150_00.sbn	SBN File	12/4/2014 3:52 PM	6,876	31%	4,769	
150_00.dbf	DBF File	12/4/2014 3:52 PM	139,890	88%	16,484	
150_00.shx	SHX File	12/4/2014 3:52 PM	5,468	45%	2,982	
thematicdata.csv	Microsoft Ex...	12/4/2014 3:52 PM	16,799	82%	2,986	
150_00.shp.xml	XML Docum...	12/4/2014 3:52 PM	117,502	94%	7,576	